

# Digital Off-Premises Signs Community Meetings

## Questionnaire/Comment Form

Thank you for participating in today's community meeting.

Please take a few minutes to respond to the questions below.

Please base your comments on the 13 existing digital signs within the City of San Antonio.



Check only one answer for each question below.

### Message dwell time of ten seconds

- much too long
- too long
- about right
- too short
- much too short
- undecided

### Daytime Intensity levels (nits)

- much too bright
- too bright
- about right
- too dim
- much too dim
- undecided

### Nighttime Intensity levels (nits)

- much too bright
- too bright
- about right
- too dim
- much too dim
- undecided

### Spacing requirements

- much too far
- too far
- about right
- too close
- much too close
- undecided

Check only one answer for the question below.

### Sign Usage for Public Information

- appropriate for many different types of public service announcements (FBI warnings, recycling information, and emergency events)

- appropriate for emergencies and alerts and time specific public information (such as air quality alert days, hurricane evacuation, Amber Alerts)

- not appropriate

- undecided

Rank the items in level of importance to you  
(1 = most important, 6 = least important)  
for the question below.

### What issues not addressed in the pilot program should be considered if a revised ordinance is considered?

- Visual effects between successive displays (i.e. slide transition)

- Amount and size of information displayed. (i.e. phone numbers, website addresses)

- Placement near key driver decision points (i.e. major interchanges, complicated merge areas)

- Incentives to promote take downs in scenic corridors and urban design districts

- Spacing from Transguide signs

- Solar capability

- Other, please specify:



# Digital Off-Premises Signs Community Meetings

## Questionnaire/Comment Form

Thank you for participating in today's community meeting.

Please take a few minutes to respond to the questions below.

Please base your comments on the 13 existing digital signs within the City of San Antonio.



Check only one answer for each question below.

### Message dwell time of ten seconds

- much too long
- too long
- about right
- too short
- much too short
- undecided

### Daytime Intensity levels (nits)

- much too bright
- too bright
- about right
- too dim
- much too dim
- undecided

### Nighttime Intensity levels (nits)

- much too bright
- too bright
- about right
- too dim
- much too dim
- undecided

### Spacing requirements

- much too far
- too far
- about right
- too close
- much too close
- undecided

Check only one answer for the question below.

### Sign Usage for Public Information

appropriate for many different types of public service announcements (FBI warnings, recycling information, and emergency events)

appropriate for emergencies and alerts and time specific public information (such as air quality alert days, hurricane evacuation, Amber Alerts)

not appropriate

undecided

Rank the items in level of importance to you  
(1 = most important, 6 = least important)  
for the question below.

### What issues not addressed in the pilot program should be considered if a revised ordinance is considered?

3 Visual effects between successive displays (i.e. slide transition)

6 Amount and size of information displayed. (i.e. phone numbers, website addresses)

1 Placement near key driver decision points (i.e. major interchanges, complicated merge areas)

2 Incentives to promote take downs in scenic corridors and urban design districts

4 Spacing from Transguide signs

5 Solar capability

Other, please specify:

---

---

---



# Digital Off-Premises Signs Community Meetings

## Questionnaire/Comment Form

Thank you for participating in today's community meeting.

Please take a few minutes to respond to the questions below.

Please base your comments on the 13 existing digital signs within the City of San Antonio.



Check only one answer for each question below.

### Message dwell time of ten seconds

- much too long
- too long
- about right
- too short
- much too short
- undecided

NO DIGITAL SIGNS PERIOD

### Daytime Intensity levels (nits)

- much too bright
- too bright
- about right
- too dim
- much too dim
- undecided

NO DIGITAL SIGNS PERIOD

### Nighttime Intensity levels (nits)

- much too bright
- too bright
- about right
- too dim
- much too dim
- undecided

NO DIGITAL SIGNS PERIOD

### Spacing requirements

- much too far
- too far
- about right
- too close
- much too close
- undecided

NO MORE BILLBOARDS

Check only one answer for the question below.

### Sign Usage for Public Information

- appropriate for many different types of public service announcements (FBI warnings, recycling information, and emergency events)

TRANS GUIDE

- appropriate for emergencies and alerts and time specific public information (such as air quality alert days, hurricane evacuation, Amber Alerts)

TRANS GUIDE

- not appropriate

- undecided

Rank the items in level of importance to you  
(1 = most important, 6 = least important)  
for the question below.

### What issues not addressed in the pilot program should be considered if a revised ordinance is considered?

- Visual effects between successive displays (i.e. slide transition)

- Amount and size of information displayed. (i.e. phone numbers, website addresses)

- Placement near key driver decision points (i.e. major interchanges, complicated merge areas)

- Incentives to promote take downs in scenic corridors and urban design districts

- Spacing from Transguide signs

- Solar capability

- Other, please specify:



# Digital Off-Premises Signs Community Meetings

## Questionnaire/Comment Form

Thank you for participating in today's community meeting.

Please take a few minutes to respond to the questions below.

Please base your comments on the 13 existing digital signs within the City of San Antonio.



Check only one answer for each question below.

### Message dwell time of ten seconds

- much too long
- too long
- about right
- too short
- much too short
- undecided

### Daytime Intensity levels (nits)

- much too bright
- too bright
- about right
- too dim
- much too dim
- undecided

### Nighttime Intensity levels (nits)

- much too bright
- too bright
- about right
- too dim
- much too dim
- undecided

### Spacing requirements

- much too far
- too far
- about right
- too close
- much too close
- undecided

Check only one answer for the question below.

### Sign Usage for Public Information

- appropriate for many different types of public service announcements (FBI warnings, recycling information, and emergency events) *Use Transguide*
- appropriate for emergencies and alerts and time specific public information (such as air quality alert days, hurricane evacuation, Amber Alerts) *Use Transguide*
- not appropriate
- undecided

Rank the items in level of importance to you  
(1 = most important, 6 = least important)  
for the question below.

### What issues not addressed in the pilot program should be considered if a revised ordinance is considered?

- Visual effects between successive displays (i.e. slide transition)
- Amount and size of information displayed. (i.e. phone numbers, website addresses)
- Placement near key driver decision points (i.e. major interchanges, complicated merge areas)
- Incentives to promote take downs in scenic corridors and urban design districts
- Spacing from Transguide signs
- Solar capability
- Other, please specify:

Check all that apply.

**What provision(s) in the sign ordinance would you like to learn more about**

- Off-premises (billboards), general requirements
- Urban design districts (i.e. scenic corridors, neighborhood conservation districts, etc)
- Temporary/weekend signs (i.e. bandit signs)
- Over-the-street banners
- Take down and removal requirements
- Nonconforming rights for existing signs
- 2007 Digital off-premises pilot program
- Other (please specify: \_\_\_\_\_)

Check only one answer for the question below.

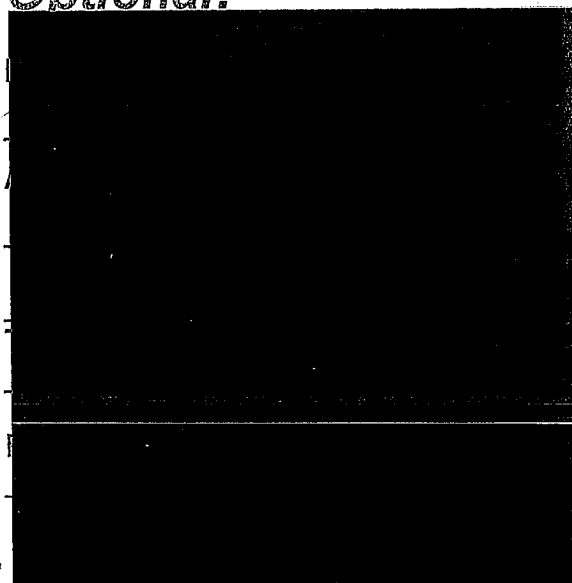
**Overall**

- The City should allow additional off-premises digital signs and with less restrictions
- The City should allow additional off-premises digital signs and using restrictions already in place
- The City should allow additional off-premises digital signs and with greater restrictions (such as longer dwell times, lower intensity levels, etc.)
- The City should not allow additional off-premises digital signs
- Undecided

**ADDITIONAL COMMENTS:**

*There should be no new billboards. Compare 281 inside Loop 410 to I-10 and you will understand that billboards are a blight to our community. We need to protect our environment*

**Optional:**



# Digital Off-Premises Signs Community Meetings

## Questionnaire/Comment Form

Thank you for participating in today's community meeting.  
Please take a few minutes to respond to the questions below.  
Please base your comments on the 13 existing digital signs within the City of San Antonio.



Check only one answer for each question below.

### Message dwell time of ten seconds

- much too long
- too long
- about right
- too short
- much too short
- undecided

### Daytime Intensity levels (nits)

- much too bright
- too bright
- about right
- too dim
- much too dim
- undecided

### Nighttime Intensity levels (nits)

- much too bright
- too bright
- about right
- too dim
- much too dim
- undecided

### Spacing requirements

- much too far
- too far
- about right
- too close
- much too close
- undecided

Check only one answer for the question below.

### Sign Usage for Public Information

appropriate for many different types of public service announcements (FBI warnings, recycling information, and emergency events)

appropriate for emergencies and alerts and time specific public information (such as air quality alert days, hurricane evacuation, Amber Alerts)

not appropriate *we have Transguide for this*

undecided

Rank the items in level of importance to you  
(1 = most important, 6 = least important)  
for the question below.

### What issues not addressed in the pilot program should be considered if a revised ordinance is considered?

- Visual effects between successive displays (i.e. slide transition)
- Amount and size of information displayed. (i.e. phone numbers, website addresses)
- Placement near key driver decision points (i.e. major interchanges, complicated merge areas)
- Incentives to promote take downs in scenic corridors and urban design districts
- Spacing from Transguide signs
- Solar capability

Other, please specify:  
*we need to rid SA of all billboards -*



# Digital Off-Premises Signs Community Meetings

## Questionnaire/Comment Form

Thank you for participating in today's community meeting.

Please take a few minutes to respond to the questions below.

Please base your comments on the 13 existing digital signs within the City of San Antonio.



16 Jul 09

Check only one answer for each question below.

### Message dwell time of ten seconds

- much too long
- too long
- about right
- too short
- much too short
- undecided

### Daytime Intensity levels (nits)

- much too bright
- too bright
- about right
- too dim
- much too dim
- undecided

### Nighttime Intensity levels (nits)

- much too bright
- too bright
- about right
- too dim
- much too dim
- undecided

### Spacing requirements

- much too far
- too far
- about right
- too close
- much too close
- undecided

Check only one answer for the question below.

### Sign Usage for Public Information

appropriate for many different types of public service announcements (FBI warnings, recycling information, and emergency events)

appropriate for emergencies and alerts and time specific public information (such as air quality alert days, hurricane evacuation, Amber Alerts)

not appropriate

undecided

Rank the items in level of importance to you  
(1 = most important, 6 = least important)  
for the question below.

### What issues not addressed in the pilot program should be considered if a revised ordinance is considered?

Visual effects between successive displays (i.e. slide transition)

Amount and size of information displayed. (i.e. phone numbers, website addresses)

Placement near key driver decision points (i.e. major interchanges, complicated merge areas)

Incentives to promote take downs in scenic corridors and urban design districts

Spacing from Transguide signs

Solar capability

Other, please specify:

No new billboards

Check all that apply.

**What provision(s) in the sign ordinance would you like to learn more about**

- Off-premises (billboards), general requirements
- Urban design districts (i.e. scenic corridors, neighborhood conservation districts, etc)
- Temporary/weekend signs (i.e. bandit signs)
- Over-the-street banners
- Take down and removal requirements
- Nonconforming rights for existing signs
- 2007 Digital off-premises pilot program
- Other (please specify):

Check only one answer for the question below.

**Overall**

- The City should allow additional off-premises digital signs and with less restrictions
- The City should allow additional off-premises digital signs and using restrictions already in place
- The City should allow additional off-premises digital signs and with greater restrictions (such as longer dwell times, lower intensity levels, etc.)
- The City should not allow additional off-premises digital signs
- Undecided

**ADDITIONAL COMMENTS:**


City of San Antonio Goals should be:

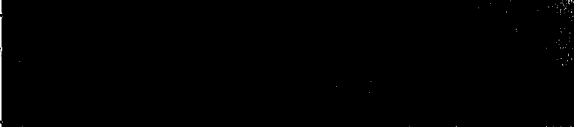
2010 - No new billboards!  
2030 - No billboards!


The City has no independent study of billboard economics. The current pilot exchanges are a 'give away'.


A 'safety study' by the San Antonio Police department is not credible.

**Optional:**

Name 

Address 

Telephone 

Email 

# Digital Off-Premises Signs Community Meetings

## Questionnaire/Comment Form

Thank you for participating in today's community meeting.

Please take a few minutes to respond to the questions below.

Please base your comments on the 13 existing digital signs within the City of San Antonio.



*Check only one answer for each question below.*

### Message dwell time of ten seconds

- much too long
- too long
- about right
- too short
- much too short
- undecided

### Daytime Intensity levels (nits)

- much too bright
- too bright
- about right
- too dim
- much too dim
- undecided

### Nighttime Intensity levels (nits)

- much too bright
- too bright
- about right
- too dim
- much too dim
- undecided

### Spacing requirements

- much too far
- too far
- about right
- too close
- much too close
- undecided

*Check only one answer for the question below.*

### Sign Usage for Public Information

appropriate for many different types of public service announcements (FBI warnings, recycling information, and emergency events)

appropriate for emergencies and alerts and time specific public information (such as air quality alert days, hurricane evacuation, Amber Alerts)

not appropriate

undecided

*Rank the items in level of importance to you (1 = most important, 6 = least important) for the question below.*

### What issues not addressed in the pilot program should be considered if a revised ordinance is considered?

Visual effects between successive displays (i.e. slide transition)

Amount and size of information displayed. (i.e. phone numbers, website addresses)

Placement near key driver decision points (i.e. major interchanges, complicated merge areas)

Incentives to promote take downs in scenic corridors and urban design districts

Spacing from Transguide signs

Solar capability

Other, please specify:

---

---

---



# Digital Off-Premises Signs Community Meetings

## Questionnaire/Comment Form

Thank you for participating in today's community meeting.

Please take a few minutes to respond to the questions below.

Please base your comments on the 13 existing digital signs within the City of San Antonio.



Check only one answer for each question below.

### Message dwell time of ten seconds

- much too long
- too long
- about right
- too short
- much too short
- undecided

### Daytime Intensity levels (nits)

- much too bright
- too bright
- about right
- too dim
- much too dim
- undecided

### Nighttime Intensity levels (nits)

- much too bright
- too bright
- about right
- too dim
- much too dim
- undecided

### Spacing requirements

- much too far
- too far
- about right
- too close
- much too close
- undecided

Check only one answer for the question below.

### Sign Usage for Public Information

appropriate for many different types of public service announcements (FBI warnings, recycling information, and emergency events)

appropriate for emergencies and alerts and time specific public information (such as air quality alert days, hurricane evacuation, Amber Alerts)

not appropriate

undecided

Rank the items in level of importance to you  
(1 = most important, 6 = least important)  
for the question below.

### What issues not addressed in the pilot program should be considered if a revised ordinance is considered?

5 Visual effects between successive displays (i.e. slide transition)

2 Amount and size of information displayed. (i.e. phone numbers, website addresses)

1 Placement near key driver decision points (i.e. major interchanges, complicated merge areas)

3 Incentives to promote take downs in scenic corridors and urban design districts

6 Spacing from Transguide signs

4 Solar capability

Other, please specify:



# Digital Off-Premises Signs Community Meetings

## Questionnaire/Comment Form

Thank you for participating in today's community meeting.  
Please take a few minutes to respond to the questions below.  
Please base your comments on the 13 existing digital signs within the City of San Antonio.



Check only one answer for each question below.

### Message dwell time of ten seconds

- much too long
- too long
- about right
- too short
- much too short
- undecided

### Daytime Intensity levels (nits)

- much too bright
- too bright
- about right
- too dim
- much too dim
- undecided

### Nighttime Intensity levels (nits)

- much too bright
- too bright
- about right
- too dim
- much too dim
- undecided

### Spacing requirements

- much too far
- too far
- about right
- too close
- much too close
- undecided

1/1 mile

Check only one answer for the question below.

### Sign Usage for Public Information

- appropriate for many different types of public service announcements (FBI warnings, recycling information, and emergency events)
- appropriate for emergencies and alerts and time specific public information (such as air quality alert days, hurricane evacuation, Amber Alerts)
- not appropriate
- undecided

Rank the items in level of importance to you  
(1 = most important, 6 = least important)  
for the question below.

### What issues not addressed in the pilot program should be considered if a revised ordinance is considered?

- Visual effects between successive displays (i.e. slide transition)
- Amount and size of information displayed. (i.e. phone numbers, website addresses)
- Placement near key driver decision points (i.e. major interchanges, complicated merge areas)
- Incentives to promote take downs in scenic corridors and urban design districts
- Spacing from Transguide signs
- Solar capability
- Other, please specify:

Check all that apply.

**What provision(s) in the sign ordinance would you like to learn more about**

- Off-premises (billboards), general requirements
- Urban design districts (i.e. scenic corridors, neighborhood conservation districts, etc)
- Temporary/weekend signs (i.e. bandit signs)
- Over-the-street banners
- Take down and removal requirements
- Nonconforming rights for existing signs
- 2007 Digital off-premises pilot program
- Other (please specify: \_\_\_\_\_)

**ADDITIONAL COMMENTS:**

NO MORE SIGNS

NO DOUBLE FACE SIGNS

NO DIGITAL INSIDE

THE LOOP IN

NEIGHBORHOODS

Check only one answer for the question below.

**Overall**

- The City should allow additional off-premises digital signs and with less restrictions
- The City should allow additional off-premises digital signs and using restrictions already in place
- The City should allow additional off-premises digital signs and with greater restrictions (such as longer dwell times, lower intensity levels, etc.)
- The City should not allow additional off-premises digital signs
- Undecided

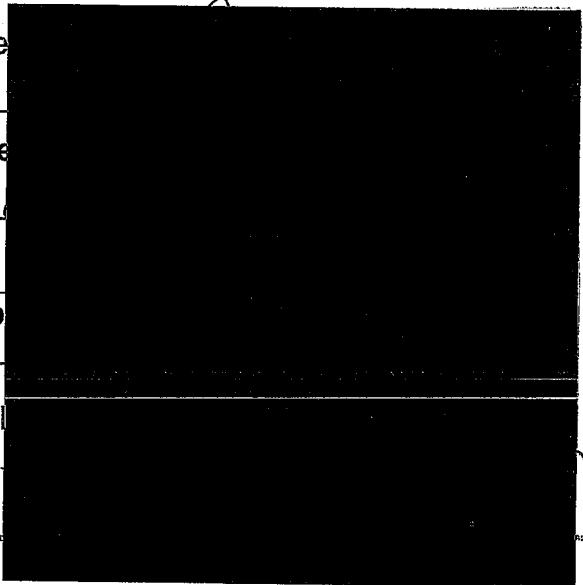
**Optional:**

Name

Address

Telephone

Email



# Digital Off-Premises Signs Community Meetings

## Questionnaire/Comment Form

Thank you for participating in today's community meeting.

Please take a few minutes to respond to the questions below.

Please base your comments on the 13 existing digital signs within the City of San Antonio.



Check only one answer for each question below.

### Message dwell time of ten seconds

- much too long
- too long
- about right
- too short
- much too short
- undecided

### Daytime Intensity levels (nits)

- much too bright
- too bright
- about right
- too dim
- much too dim
- undecided

### Nighttime Intensity levels (nits)

- much too bright
- too bright
- about right
- too dim
- much too dim
- undecided

### Spacing requirements

- much too far
- too far
- about right
- too close
- much too close
- undecided

Check only one answer for the question below.

### Sign Usage for Public Information

appropriate for many different types of public service announcements (FBI warnings, recycling information, and emergency events)

appropriate for emergencies and alerts and time specific public information (such as air quality alert days, hurricane evacuation, Amber Alerts)

not appropriate

undecided

Rank the items in level of importance to you  
(1 = most important, 6 = least important)  
for the question below.

### What issues not addressed in the pilot program should be considered if a revised ordinance is considered?

Visual effects between successive displays (i.e. slide transition)

Amount and size of information displayed. (i.e. phone numbers, website addresses)

Placement near key driver decision points (i.e. major interchanges, complicated merge areas)

Incentives to promote take downs in scenic corridors and urban design districts

Spacing from Transguide signs

Solar capability

Other, please specify:

---

---

---



# Digital Off-Premises Signs Community Meetings

## Questionnaire/Comment Form

Thank you for participating in today's community meeting.

Please take a few minutes to respond to the questions below.

Please base your comments on the 13 existing digital signs within the City of San Antonio.



Check only one answer for each question below.

### Message dwell time of ten seconds

- much too long
- too long
- about right
- too short
- much too short
- undecided

### Daytime Intensity levels (nits)

- much too bright
- too bright
- about right
- too dim
- much too dim
- undecided

### Nighttime Intensity levels (nits)

- much too bright
- too bright
- about right
- too dim
- much too dim
- undecided

### Spacing requirements

- much too far
- too far
- about right
- too close
- much too close
- undecided

Check only one answer for the question below.

### Sign Usage for Public Information

appropriate for many different types of public service announcements (FBI warnings, recycling information, and emergency events)

appropriate for emergencies and alerts and time specific public information (such as air quality alert days, hurricane evacuation, Amber Alerts)

not appropriate

undecided

Rank the items in level of importance to you  
(1 = most important, 6 = least important)  
for the question below.

### What issues not addressed in the pilot program should be considered if a revised ordinance is considered?

4 Visual effects between successive displays (i.e. slide transition)

5 Amount and size of information displayed. (i.e. phone numbers, website addresses)

1 Placement near key driver decision points (i.e. major interchanges, complicated merge areas)

2 Incentives to promote take downs in scenic corridors and urban design districts

3 Spacing from Transguide signs

6 Solar capability

Other, please specify:

---

---

---

Check all that apply.

**What provision(s) in the sign ordinance would you like to learn more about**

- Off-premises (billboards), general requirements
- Urban design districts (i.e. scenic corridors, neighborhood conservation districts, etc)
- Temporary/weekend signs (i.e. bandit signs)
- Over-the-street banners
- Take down and removal requirements
- Nonconforming rights for existing signs
- 2007 Digital off-premises pilot program
- Other (please specify):

Check only one answer for the question below.

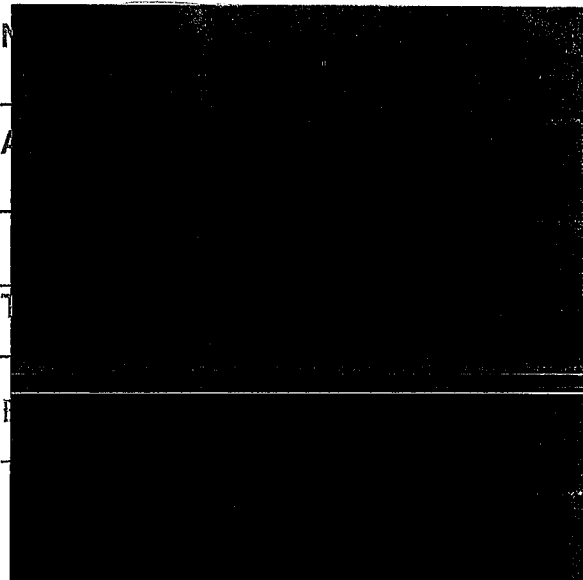
**Overall**

- The City should allow additional off-premises digital signs and with less restrictions
- The City should allow additional off-premises digital signs and using restrictions already in place
- The City should allow additional off-premises digital signs and with greater restrictions (such as longer dwell times, lower intensity levels, etc.)
- The City should not allow additional off-premises digital signs *And should remove all those now allowed.*
- Undecided

**ADDITIONAL COMMENTS:**

*From the fear of all the comments, if they are representative of comments from other meetings the result should be the prohibition of any digital sign and the removal of all those now in use.*

**Optional:**



*011*  
*3*

# Digital Off-Premises Signs Community Meetings

## Questionnaire/Comment Form

Thank you for participating in today's community meeting.

Please take a few minutes to respond to the questions below.

Please base your comments on the 13 existing digital signs within the City of San Antonio.



Check only one answer for each question below.

### Message dwell time of ten seconds

- much too long
- too long
- about right
- too short
- much too short
- undecided

### Daytime Intensity levels (nits)

- much too bright
- too bright
- about right
- too dim
- much too dim
- undecided

### Nighttime Intensity levels (nits)

- much too bright
- too bright
- about right
- too dim
- much too dim
- undecided

### Spacing requirements

- much too far
- too far
- about right
- too close
- much too close
- undecided

Check only one answer for the question below.

### Sign Usage for Public Information

appropriate for many different types of public service announcements (FBI warnings, recycling information, and emergency events)

appropriate for emergencies and alerts and time specific public information (such as air quality alert days, hurricane evacuation, Amber Alerts)

not appropriate

undecided

Rank the items in level of importance to you (1 = most important, 6 = least important) for the question below.

### What issues not addressed in the pilot program should be considered if a revised ordinance is considered?

Visual effects between successive displays (i.e. slide transition)

Amount and size of information displayed. (i.e. phone numbers, website addresses)

Placement near key driver decision points (i.e. major interchanges, complicated merge areas)

Incentives to promote take downs in scenic corridors and urban design districts

Spacing from Transguide signs

Solar capability

Other, please specify:

---

---

---

Check all that apply.

**What provision(s) in the sign ordinance would you like to learn more about**

- Off-premises (billboards), general requirements
- Urban design districts (i.e. scenic corridors, neighborhood conservation districts, etc)
- Temporary/weekend signs (i.e. bandit signs)
- Over-the-street banners
- Take down and removal requirements
- Nonconforming rights for existing signs
- 2007 Digital off-premises pilot program
- Other (please specify: \_\_\_\_\_)

**ADDITIONAL COMMENTS:**

*Placement is key to a successful program*

*Combine all this with cell phone use*

*SAFETY*

Check only one answer for the question below.

**Overall**

- The City should allow additional off-premises digital signs and with less restrictions
- The City should allow additional off-premises digital signs and using restrictions already in place
- The City should allow additional off-premises digital signs and with greater restrictions (such as longer dwell times, lower intensity levels, etc.)
- The City should not allow additional off-premises digital signs
- Undecided

**Optional:**

Name

Address:

Telephone:

Email:

# Digital Off-Premises Signs Community Meetings

## Questionnaire/Comment Form

Thank you for participating in today's community meeting.

Please take a few minutes to respond to the questions below.

Please base your comments on the 13 existing digital signs within the City of San Antonio.



Check only one answer for each question below.

### Message dwell time of ten seconds

- much too long
- too long
- about right
- too short
- much too short
- undecided

### Daytime Intensity levels (nits)

- much too bright
- too bright
- about right
- too dim
- much too dim
- undecided

### Nighttime Intensity levels (nits)

- much too bright
- too bright
- about right
- too dim
- much too dim
- undecided

### Spacing requirements

- much too far
- too far
- about right
- too close
- much too close
- undecided

Check only one answer for the question below.

### Sign Usage for Public Information

appropriate for many different types of public service announcements (FBI warnings, recycling information, and emergency events)

appropriate for emergencies and alerts and time specific public information (such as air quality alert days, hurricane evacuation, Amber Alerts)

not appropriate

undecided

Rank the items in level of importance to you  
(1 = most important, 6 = least important)  
for the question below.

### What issues not addressed in the pilot program should be considered if a revised ordinance is considered?

Visual effects between successive displays (i.e. slide transition)

Amount and size of information displayed. (i.e. phone numbers, website addresses)

Placement near key driver decision points (i.e. major interchanges, complicated merge areas)

Incentives to promote take downs in scenic corridors and urban design districts

Spacing from Transguide signs

Solar capability

Other, please specify:

---

---

---

Check all that apply.

**What provision(s) in the sign ordinance would you like to learn more about**

- Off-premises (billboards), general requirements
- Urban design districts (i.e. scenic corridors, neighborhood conservation districts, etc)
- Temporary/weekend signs (i.e. bandit signs)
- Over-the-street banners
- Take down and removal requirements
- Nonconforming rights for existing signs
- 2007 Digital off-premises pilot program
- Other (please specify: \_\_\_\_\_)

Check only one answer for the question below.

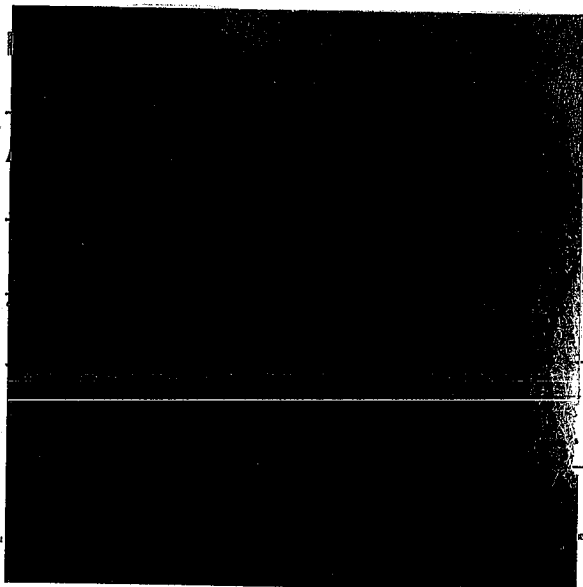
**Overall**

- The City should allow additional off-premises digital signs and with less restrictions
- The City should allow additional off-premises digital signs and using restrictions already in place
- The City should allow additional off-premises digital signs and with greater restrictions (such as longer dwell times, lower intensity levels, etc.)
- The City should not allow additional off-premises digital signs
- Undecided

**ADDITIONAL COMMENTS:**

I REPRESENT VALENCIA HOME OWNERS ASSOCIATION. OUR ASSOCIATION BOARD VOTED TO NOT ALLOW ANY ADDITIONAL OFF-PREMISE BILL BOARDS OF ANY TYPE - DIGITAL AND ALL OTHERS

**Optional:**



014

# Digital Off-Premises Signs Community Meetings

## Questionnaire/Comment Form

Thank you for participating in today's community meeting.

Please take a few minutes to respond to the questions below.

Please base your comments on the 13 existing digital signs within the City of San Antonio.



Check only one answer for each question below.

### Message dwell time of ten seconds

- much too long
- too long
- about right
- too short
- much too short
- undecided

### Daytime Intensity levels (nits)

- much too bright
- too bright
- about right
- too dim
- much too dim
- undecided

### Nighttime Intensity levels (nits)

- much too bright
- too bright
- about right
- too dim
- much too dim
- undecided

### Spacing requirements

- much too far
- too far
- about right
- too close
- much too close
- undecided

Check only one answer for the question below.

### Sign Usage for Public Information

appropriate for many different types of public service announcements (FBI warnings, recycling information, and emergency events)

appropriate for emergencies and alerts and time specific public information (such as air quality alert days, hurricane evacuation, Amber Alerts)

not appropriate

undecided

Rank the items in level of importance to you  
(1 = most important, 6 = least important)  
for the question below.

### What issues not addressed in the pilot program should be considered if a revised ordinance is considered?

5 Visual effects between successive displays (i.e. slide transition)

1 Amount and size of information displayed. (i.e. phone numbers, website addresses)

2 Placement near key driver decision points (i.e. major interchanges, complicated merge areas)

3 Incentives to promote take downs in scenic corridors and urban design districts

4 Spacing from Transguide signs

6 Solar capability

Other, please specify:

---

---

---



# Digital Off-Premises Signs Community Meetings

## Questionnaire/Comment Form

Thank you for participating in today's community meeting.

Please take a few minutes to respond to the questions below.

Please base your comments on the 13 existing digital signs within the City of San Antonio.



Check only one answer for each question below.

### Message dwell time of ten seconds

- much too long
- too long
- about right
- too short
- much too short
- undecided

### Daytime Intensity levels (nits)

- much too bright
- too bright
- about right
- too dim
- much too dim
- undecided

### Nighttime Intensity levels (nits)

- much too bright
- too bright
- about right
- too dim
- much too dim
- undecided

### Spacing requirements

- much too far
- too far
- about right
- too close
- much too close
- undecided

Check only one answer for the question below.

### Sign Usage for Public Information

appropriate for many different types of public service announcements (FBI warnings, recycling information, and emergency events)

appropriate for emergencies and alerts and time specific public information (such as air quality alert days, hurricane evacuation, Amber Alerts)

not appropriate

undecided

Rank the items in level of importance to you  
(1 = most important, 6 = least important)  
for the question below.

### What issues not addressed in the pilot program should be considered if a revised ordinance is considered?

Visual effects between successive displays (i.e. slide transition)

Amount and size of information displayed. (i.e. phone numbers, website addresses)

Placement near key driver decision points (i.e. major interchanges, complicated merge areas)

Incentives to promote take downs in scenic corridors and urban design districts

Spacing from Transguide signs

Solar capability

Other, please specify:



# Digital Off-Premises Signs Community Meetings

## Questionnaire/Comment Form

Thank you for participating in today's community meeting.

Please take a few minutes to respond to the questions below.

Please base your comments on the 13 existing digital signs within the City of San Antonio.



Check only one answer for each question below.

### Message dwell time of ten seconds

- much too long
- too long
- about right
- too short
- much too short
- undecided

### Daytime Intensity levels (nits)

- much too bright
- too bright
- about right
- too dim
- much too dim
- undecided

### Nighttime Intensity levels (nits)

- much too bright
- too bright
- about right
- too dim
- much too dim
- undecided

### Spacing requirements

- much too far
- too far
- about right
- too close
- much too close
- undecided

Check only one answer for the question below.

### Sign Usage for Public Information

- appropriate for many different types of public service announcements (FBI warnings, recycling information, and emergency events)

- appropriate for emergencies and alerts and time specific public information (such as air quality alert days, hurricane evacuation, Amber Alerts)

- not appropriate

- undecided

Rank the items in level of importance to you  
(1 = most important, 6 = least important)  
for the question below.

### What issues not addressed in the pilot program should be considered if a revised ordinance is considered?

- 5 Visual effects between successive displays (i.e. slide transition)
- 4 Amount and size of information displayed. (i.e. phone numbers, website addresses)
- 3 Placement near key driver decision points (i.e. major interchanges, complicated merge areas)
- 6 Incentives to promote take downs in scenic corridors and urban design districts
- 1 Spacing from Transguide signs
- 2 Solar capability
- Other, please specify:

---

---

---



# Digital Off-Premises Signs Community Meetings

## Questionnaire/Comment Form

Thank you for participating in today's community meeting.

Please take a few minutes to respond to the questions below.

Please base your comments on the 13 existing digital signs within the City of San Antonio.



*Check only one answer for each question below.*

### Message dwell time of ten seconds

- much too long
- too long
- about right
- too short
- much too short
- undecided

### Daytime Intensity levels (nits)

- much too bright
- too bright
- about right
- too dim
- much too dim
- undecided

### Nighttime Intensity levels (nits)

- much too bright
- too bright
- about right
- too dim
- much too dim
- undecided

### Spacing requirements

- much too far
- too far
- about right
- too close
- much too close
- undecided

*Check only one answer for the question below.*

### Sign Usage for Public Information

appropriate for many different types of public service announcements (FBI warnings, recycling information, and emergency events)

appropriate for emergencies and alerts and time specific public information (such as air quality alert days, hurricane evacuation, Amber Alerts)

not appropriate

undecided

*Rank the items in level of importance to you (1 = most important, 6 = least important) for the question below.*

### What issues not addressed in the pilot program should be considered if a revised ordinance is considered?

Visual effects between successive displays (i.e. slide transition)

Amount and size of information displayed. (i.e. phone numbers, website addresses)

Placement near key driver decision points (i.e. major interchanges, complicated merge areas)

Incentives to promote take downs in scenic corridors and urban design districts

Spacing from Transguide signs

Solar capability

Other, please specify:

---

---

---

